

# Recombinant Cys-Protein A/G/L

Catalog #: 1006-03 Lot #: See label

**PrimeGene**<sup>™</sup>  
a biotechne brand

## Description

### Molecular Weight:

Approximately 89.3 kDa with a Cys on N-terminus, a single non-glycosylated polypeptide chain containing 806 amino acids.

### Source:

*Escherichia coli*.

### Quantity:

1mg/5mg/100mg/1g

### Protein per Gram Powder:\*

See Label.

### Concentration for 1 unity OD at 280 nm:

1.412 mg/ml

## Specification

### Physical Appearance:

Sterile Filtered White lyophilized (freeze-dried) powder.

### Purity:

> 95 % by SDS-PAGE and SEC-HPLC analyses.

### Specificity:

The recombinant Protein A/G/L is a genetically engineered protein containing 5 IgG-binding regions of protein A, 2 of protein G and 5 of Protein L. Cell wall binding region, cell membrane binding region and albumin binding region have been removed from the recombinant

Protein A/G/L to ensure the maximum specific IgG binding. The recombinant Protein A/G/L is ideal for purification of polyclonal or monoclonal IgG antibodies. Protein A/G/L binds to human, mouse, rat cow, goat, sheep, rabbit, guinea pig, pig, dog and cat IgG.

### Endotoxin Level:

Less than 0.1 EU/ $\mu$ g of Cys-Protein A/G/L as determined by LAL method.

### Formulation:

Lyophilized from additive free solution.

## Usage Guide

### Stability & Storage:

- Use a manual defrost freezer and avoid repeated freeze-thaw cycles.
- 12 months from date of receipt, -20 to -70 °C as supplied.
- 1 month, 2 to 8 °C under sterile conditions after reconstitution.
- 3 months, -20 to -70 °C under sterile conditions after reconstitution.

### Reconstitution:

Dissolve in distilled water or saline.

### Shipping:

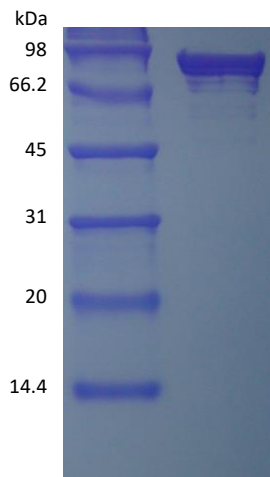
The product is shipped at ambient temperature. Upon receipt, store it immediately at -20 °C.

\*Masses of the protein and powder are not equal.

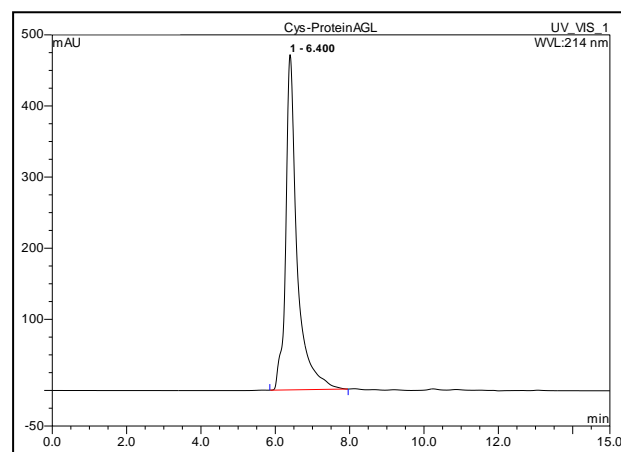
## Background

Protein A/G/L is a genetically engineered protein that combines the IgG binding profiles of all Protein A, Protein G and Protein L. It is a gene fusion product. Recombinant fusion protein A/G/L contains five Ig-binding regions of protein L, five IgG binding domains from Protein A, and two Ig-binding region of protein G. Cell wall binding regions, albumin binding regions and other non-specific binding regions have all been eliminated from the fusion protein to ensure the maximum specific IgG binding.

## SDS-PAGE



## SEC-HPLC



Rev. 09/19/2023 V.3

Manufactured By Shanghai PrimeGene Bio-Tech Co., Ltd.

**FOR RESEARCH USE ONLY. NOT FOR HUMAN USE.**